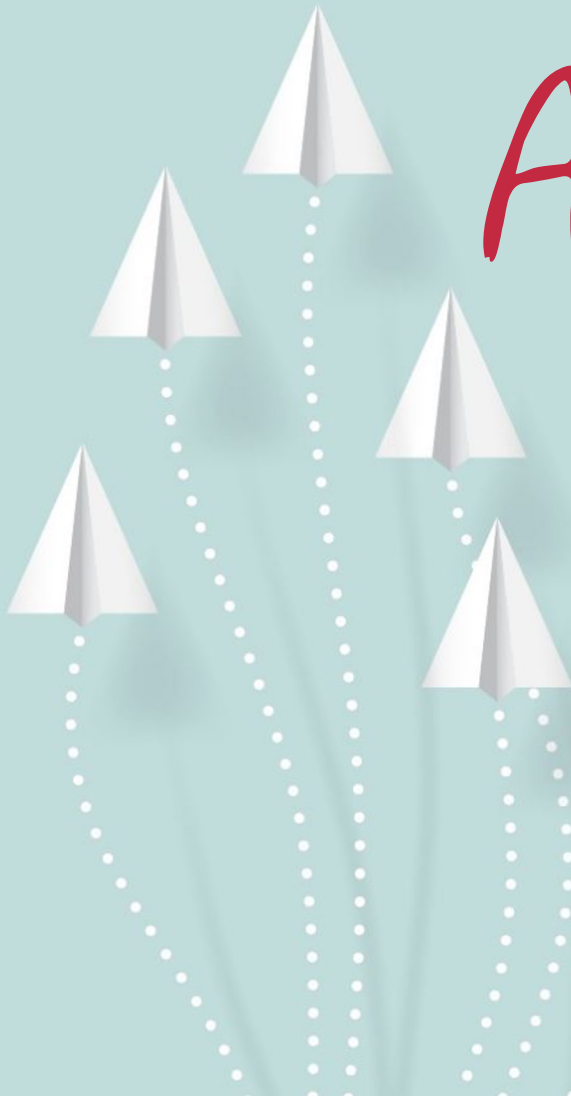


# Rhetorical Analysis Review



# #1 - Type of Discourse

---

Deliberative

Forensic

Epideictic

**#2 - Thesis**

---

*#3 – Divisions*  
*#4 – How do they support the thesis?*

---

# #5 - Type of Intro

Inquisitive

Narrative

Preparatory

Paradoxical

Corrective

# #6 - Appeals

---

Ethos

Pathos

Logos

**\*\*This should be the most substantial part of your Rhetorical Analysis Essay!!**

# #7 – Type of Conclusion



Inspire the audience with a favorable opinion of ourselves and an unfavorable opinion of our opponents



Amplify the force of the points we have made and extenuate the force of the points made by the opposition



Rouse the appropriate emotions in the audience & call to action, if applicable



Restate in a summary way our facts and arguments

#8 - *Fallacies?*

---